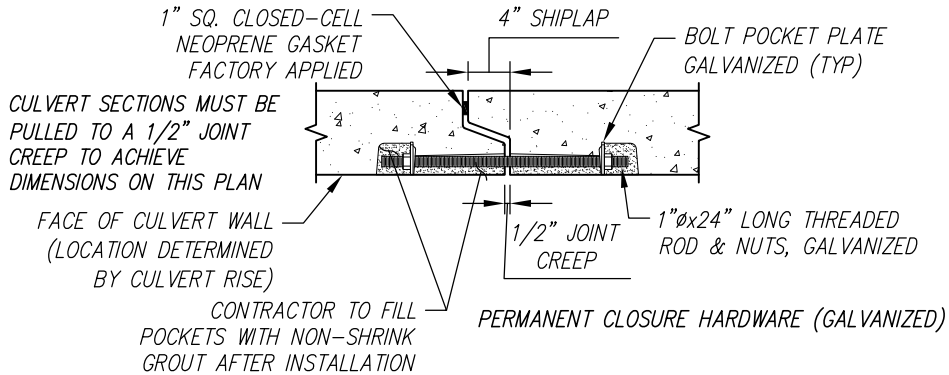
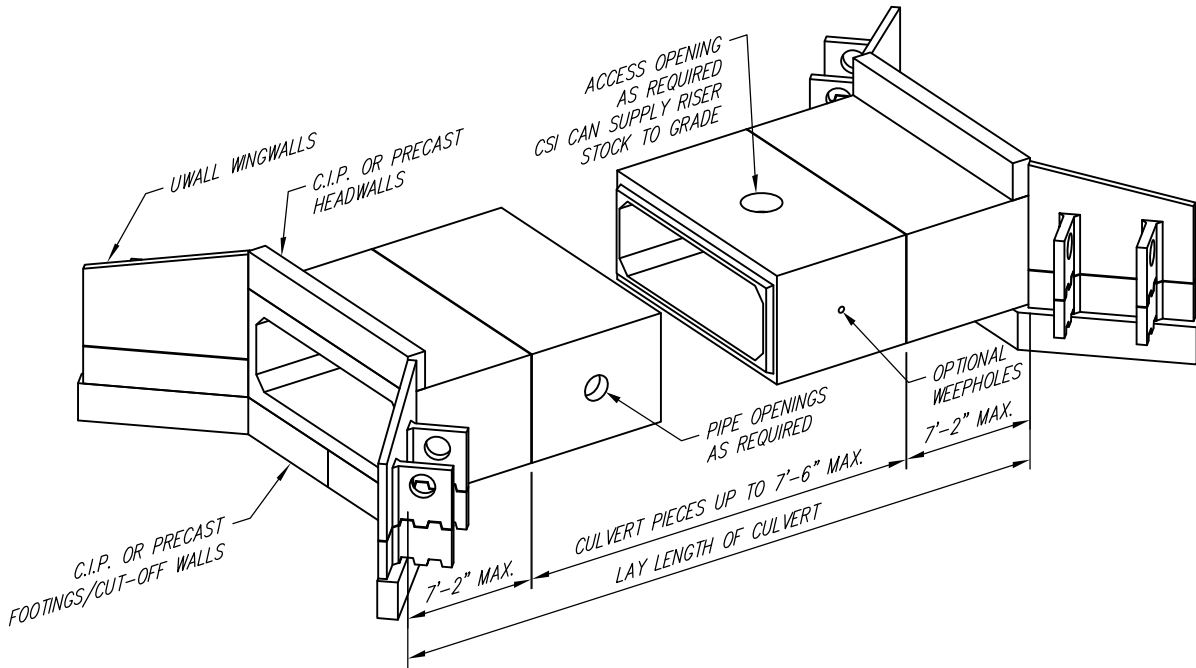




Concrete Systems Inc.  
 9 Commercial St., Hudson, NH, 03051  
 Phone 603-889-4163  
 Fax 603-889-0039

# Precast Box Culvert with UWall Single Cell



**CONNECTION/JOINT DETAIL**

**GENERAL NOTES:**

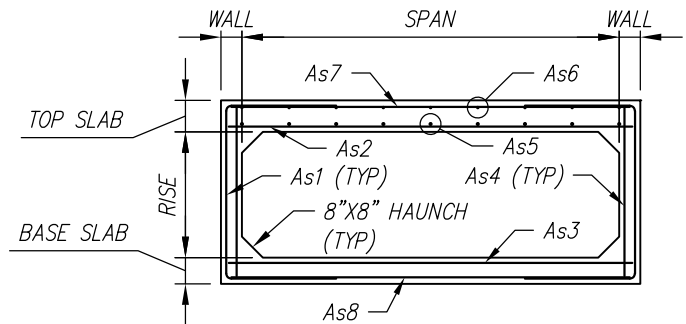
**1. REFERENCE STANDARDS:**

AASHTO "LRFD BRIDGE DESIGN SPECIFICATIONS"  
 ASTM C1577

**2. DESIGN PARAMETERS:**

LIVE LOAD: AS SPECIFIED  
 EARTH COVER: PER JOB CONDITIONS  
 CONCRETE: DESIGN STRENGTH  $f'_c = 5000$  PSI  
 UNIT WEIGHT = 150 PCF  
 REINFORCING: ASTM A615 (REBAR) GR 60  
 ASTM A1064 (WWF) FY = 65 KSI  
 SOIL UNIT WEIGHT = 120 PCF  
 MINIMUM LATERAL PRESSURE = 30 PCF  
 MAXIMUM LATERAL PRESSURE = 60 PCF  
 COVER TO REINFORCING: 2" U.N.O.

**3. EXTERIOR DAMPPROOFING CAN BE SUPPLIED BY CSI.**



**REINFORCING SECTION**