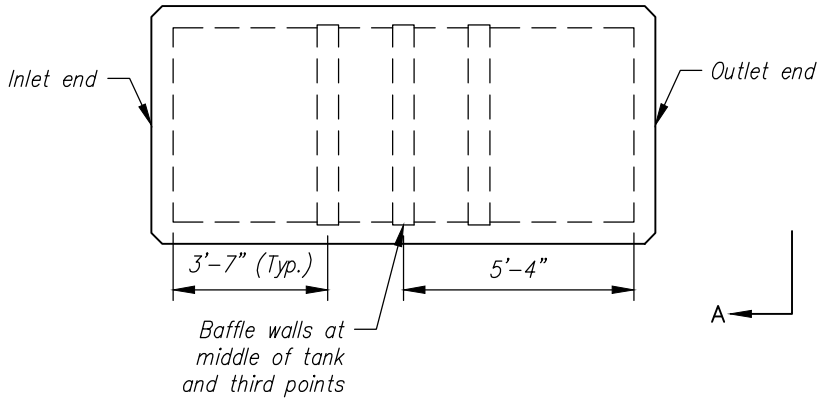


**REQUIRED INFORMATION FROM CONTRACTOR**

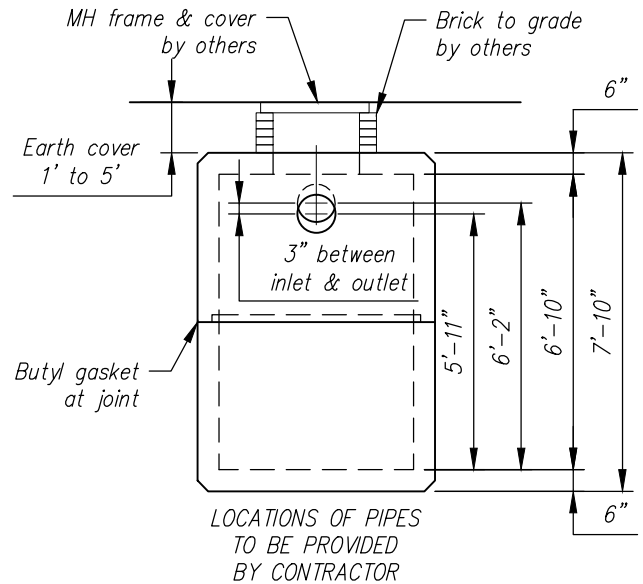
STRUCTURE QUANTITY	INLET PIPE SIZE & TYPE	OUTLET PIPE SIZE & TYPE	ACCESS OPENING SIZE	BAFFLE WALL QUANTITY

**TANK DIMENSIONS:**  
 INSIDE LENGTH = 10'-8"  
 INSIDE WIDTH = 4'-6"  
 OUTSIDE LENGTH = 11'-8"  
 OUTSIDE WIDTH = 5'-6"

**NOTE: CONTRACTOR TO SKETCH IN LOCATIONS OF INLET AND OUTLET PIPES AS WELL AS LOCATIONS OF ACCESS OPENINGS**



**PLAN**

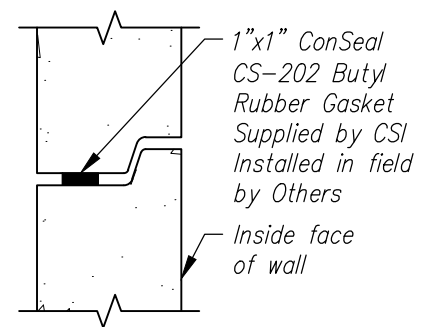


**ELEVATION A-A**

<b>WEIGHTS (MAX.)</b>		
UPPER SECTION	6.55	TONS
LOWER SECTION	6.55	TONS
BAFFLE WALL (EACH)	0.76	TONS

**Design Parameters:**

- Live Load: AASHTO HS20-44
- Earth Cover: 1' to 5'
- Concrete: Design strength  $f'_c = 5000$  psi  
Unit weight = 150 pcf
- Reinforcing: ASTM A615 Grade 60
- Earth Pressure Coefficient = 0.30
- Soil: Unit weight = 120 pcf
- Cover to reinforcing: 1 1/2" u.n.o.



**JOINT DETAIL**

**2,000 GALLON HEAVY DUTY TANK**

CONTRACTOR:

Contract No.

ENGINEER:

Date

JOB:

Drawing No.

HT2K

LOCATION:

Revision



**Concrete Systems Inc.**  
 9 Commercial St., Hudson, NH, 03051  
 Phone 603-889-4163  
 Fax 603-889-0039