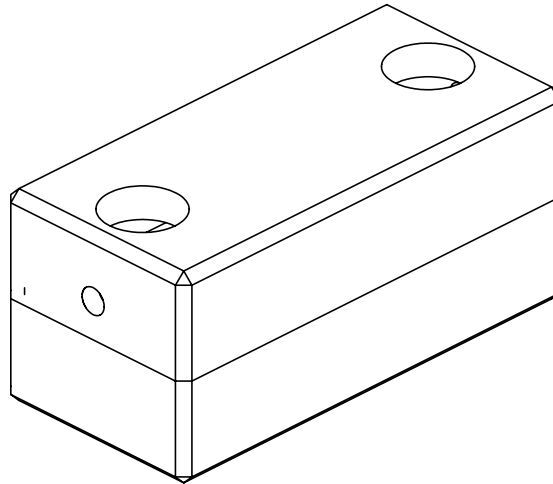




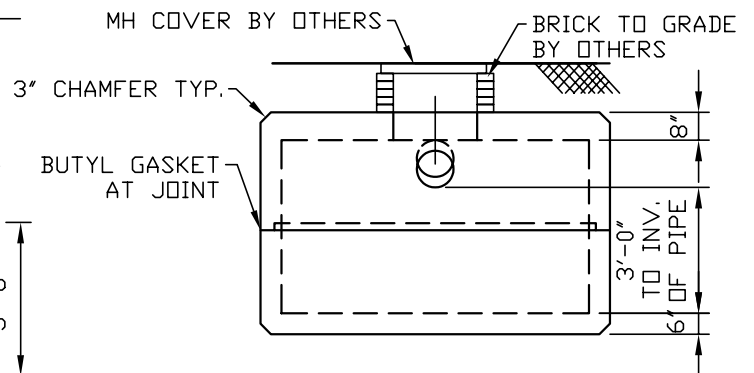
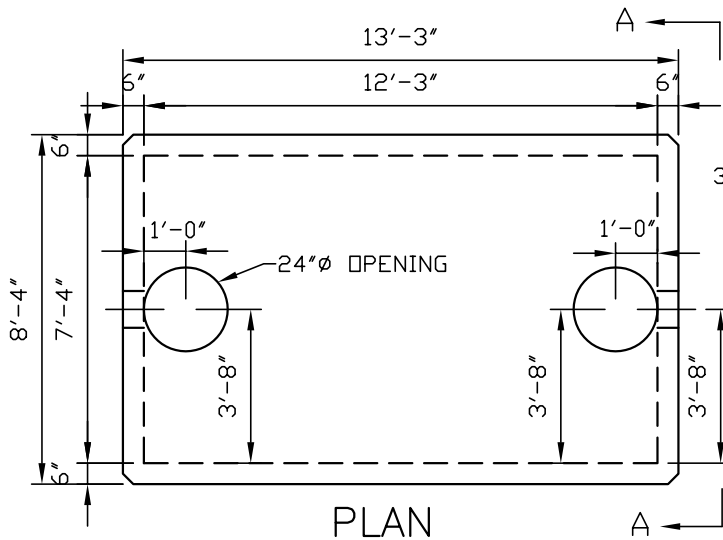
Concrete Systems Inc.  
 9 Commercial St., Hudson, NH, 03051  
 Phone 603-889-4163  
 Fax 603-889-0039

# 2,000 Gallon Heavy Duty Tank Low Profile

Model# HT2KL



WEIGHT	
Top Section	Bottom Section
8.27	7.23
<b>Total Weight</b>	
15.50 Tons	



**Design Parameters:**

- Live load: HS20
- Earth Cover: 0 to 4'
- Concrete: Design strength  $f_c = 5000$  psi
- Reinforcing: ASTM A615 (Rebar) Grade 60  
 ASTM A185 (WWF)  $f_y = 60,000$  psi