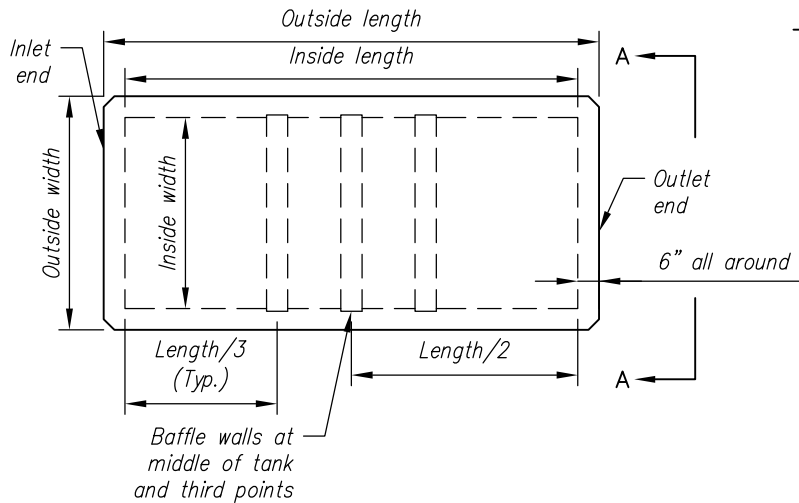


**REQUIRED INFORMATION FROM CONTRACTOR**

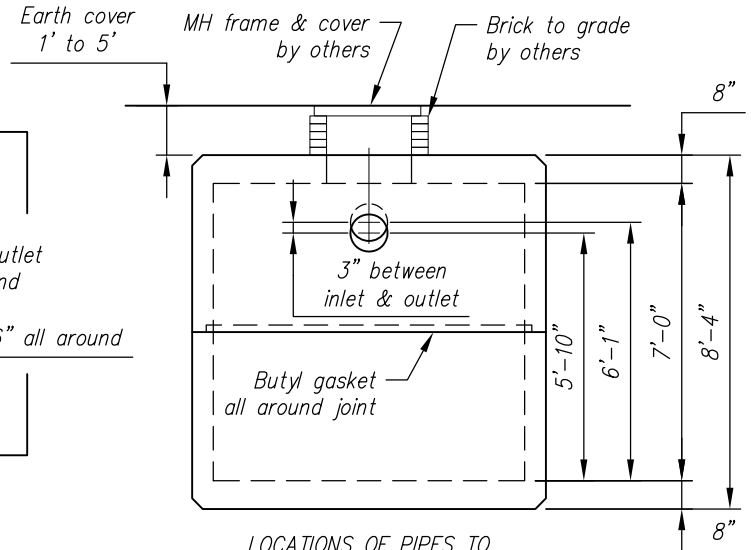
STRUCTURE QUANTITY	INLET PIPE SIZE & TYPE	OUTLET PIPE SIZE & TYPE	ACCESS OPENING SIZE	BAFFLE WALL QUANTITY

**TANK DIMENSIONS:**  
 INSIDE LENGTH = 16'-8"  
 INSIDE WIDTH = 7'-4"  
 OUTSIDE LENGTH = 17'-8"  
 OUTSIDE WIDTH = 8'-4"

**NOTE: CONTRACTOR TO SKETCH IN LOCATIONS OF INLET AND OUTLET PIPES AS WELL AS LOCATIONS OF ACCESS OPENINGS**



**PLAN**

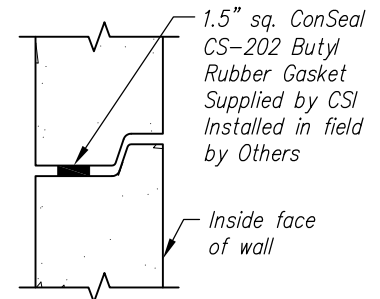


LOCATIONS OF PIPES TO BE PROVIDED BY CONTRACTOR

**ELEVATION A-A**

<b>WEIGHTS (MAX.)</b>		
UPPER SECTION	13.92	TONS
LOWER SECTION	13.92	TONS
BAFFLE WALL (EACH)	1.24	TONS

**Design Parameters:**  
 Live Load: AASHTO HS20-44  
 Earth Cover: 1' to 5'  
 Concrete: Design strength  $f'_c = 5000$  psi  
 Unit weight = 150 pcf  
 Reinforcing: ASTM A615 Grade 60  
 Earth Pressure Coefficient = 0.30  
 Soil: Unit weight = 120 pcf  
 Cover to reinforcing: 1 1/2" u.n.o.



**JOINT DETAIL**

**5,000 GALLON HEAVY DUTY TANK**

CONTRACTOR:

Contract No.

ENGINEER:

Date

JOB:

Drawing No.

LOCATION:

HT5K

Revision



**Concrete Systems Inc.**  
 9 Commercial St., Hudson, NH, 03051  
 Phone 603-889-4163  
 Fax 603-889-0039