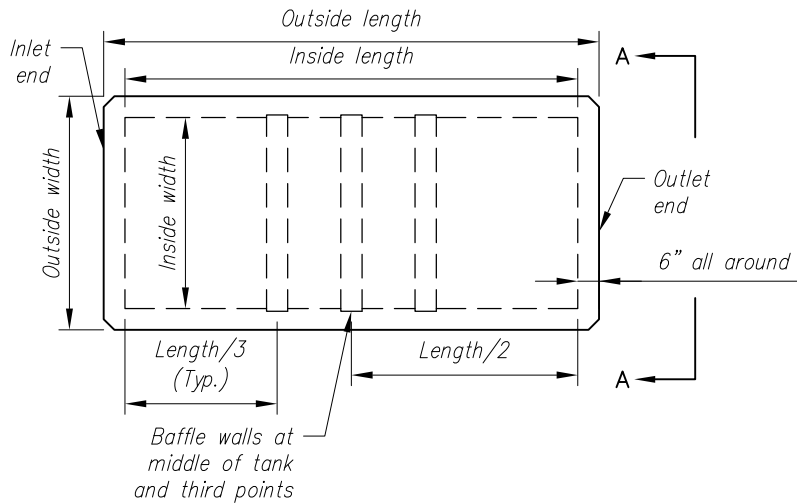


**REQUIRED INFORMATION FROM CONTRACTOR**

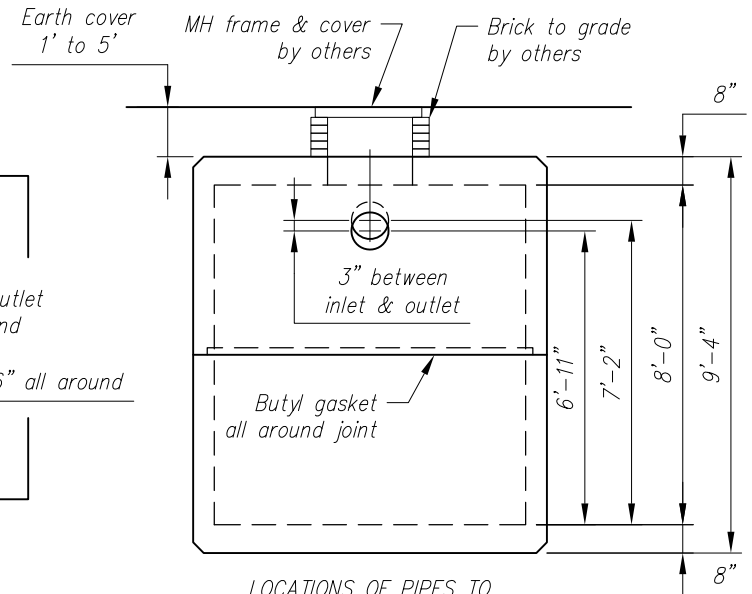
<b>STRUCTURE QUANTITY</b>	<b>INLET PIPE SIZE &amp; TYPE</b>	<b>OUTLET PIPE SIZE &amp; TYPE</b>	<b>ACCESS OPENING SIZE</b>	<b>BAFFLE WALL QUANTITY</b>

**TANK DIMENSIONS:**  
 INSIDE LENGTH = 16'-8"  
 INSIDE WIDTH = 7'-4"  
 OUTSIDE LENGTH = 17'-8"  
 OUTSIDE WIDTH = 8'-4"

**NOTE: CONTRACTOR TO SKETCH IN LOCATIONS OF INLET AND OUTLET PIPES AS WELL AS LOCATIONS OF ACCESS OPENINGS**



**PLAN**



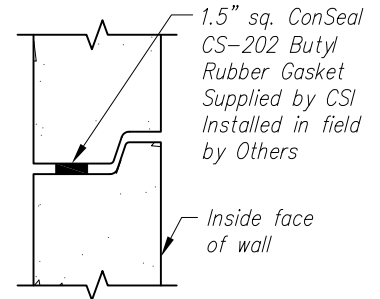
LOCATIONS OF PIPES TO BE PROVIDED BY CONTRACTOR

**ELEVATION A-A**

<b>WEIGHTS (MAX.)</b>		
UPPER SECTION	14.86	TONS
LOWER SECTION	14.86	TONS
BAFFLE WALL (EACH)	1.47	TONS

**Design Parameters:**

- Live Load: AASHTO HS20-44
- Earth Cover: 1' to 5'
- Concrete: Design strength  $f'_c = 5000$  psi  
Unit weight = 150 pcf
- Reinforcing: ASTM A615 Grade 60
- Earth Pressure Coefficient = 0.30
- Soil: Unit weight = 120 pcf
- Cover to reinforcing: 1 1/2" u.n.o.



**JOINT DETAIL**

**6,000 GALLON HEAVY DUTY TANK**

**CONTRACTOR:**

**Contract No.**

**ENGINEER:**

**Date**

**JOB:**

**Drawing No.**

**LOCATION:**

**HT6K  
Revision**



**Concrete Systems Inc.**  
 9 Commercial St., Hudson, NH, 03051  
 Phone 603-889-4163  
 Fax 603-889-0039