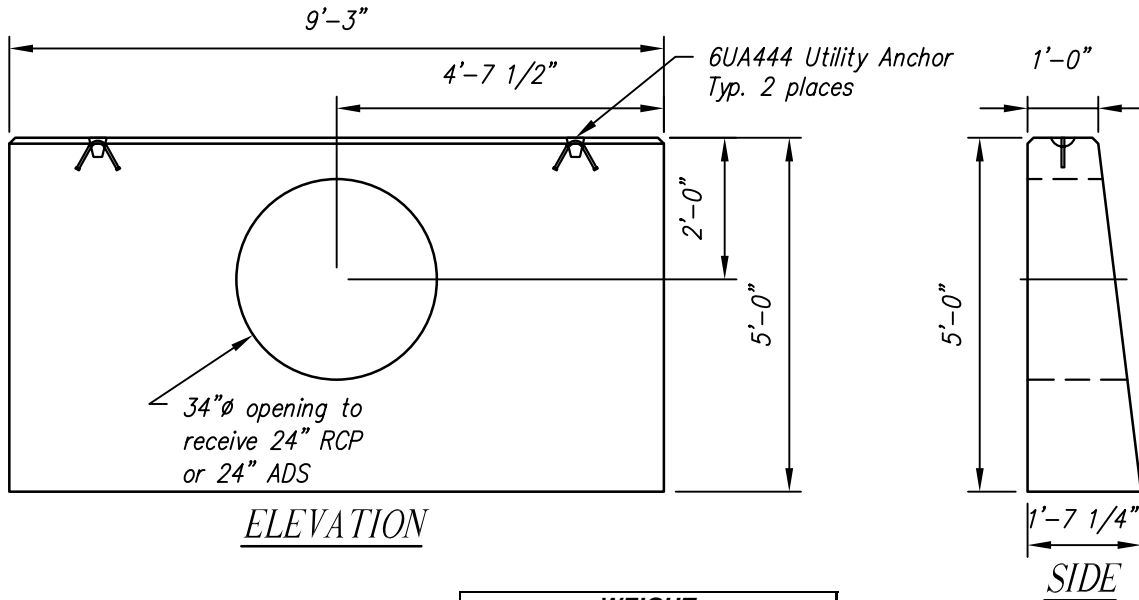
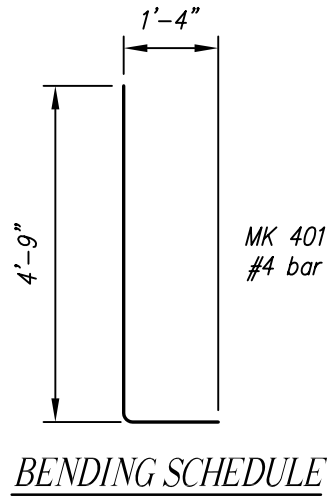
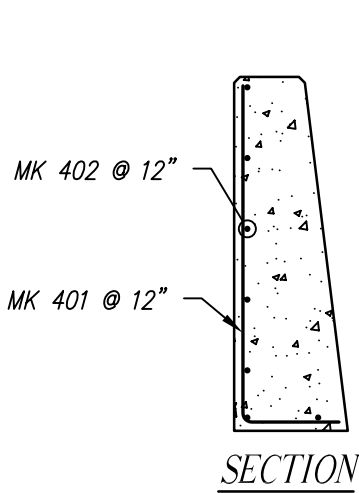


GENERAL NOTES:

1. Concrete Design Strength: $f'c = 4,000$ psi
2. Reinforcing: ASTM A615 (Rebar) Grade 60



WEIGHT	
BSHW-24	3.91 TONS

BSHW-24 - BILL OF MATERIALS / EMBEDS				
CSI ID#	DESCRIPTION	QTY	UM	COMMENTS
EM-00110	UTILITY ANCHOR 6UA444	2	EA	
RM-00013	REBAR #4 BLACK GR 60	83	LB	
MX-FA4000SM	MIX DESIGN FLY ASH 4000 SUMMER MIX	1.93	CY	

Rebar Schedule			
MK	QTY	LENGTH	
401 #4	10	6	1"
402 #4	7	9	0"

HEADWALL FOR 24" RCP OR 24" ADS
CSI #BSHW-24

CONTRACTOR:

Contract No.

ENGINEER:

Date

JOB:

Drawing No.

LOCATION:

BSHW-24
Revision



Concrete Systems Inc.
9 Commercial St., Hudson, NH, 03051
Phone 603-889-4163
Fax 603-889-0039