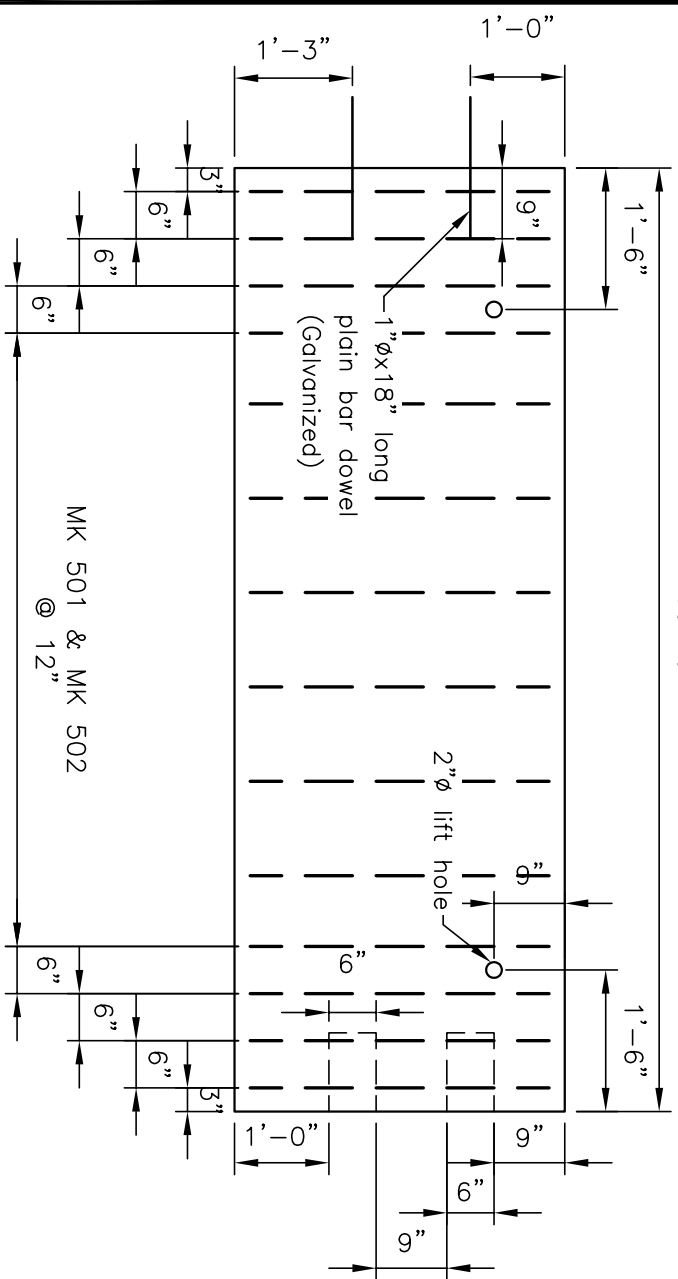
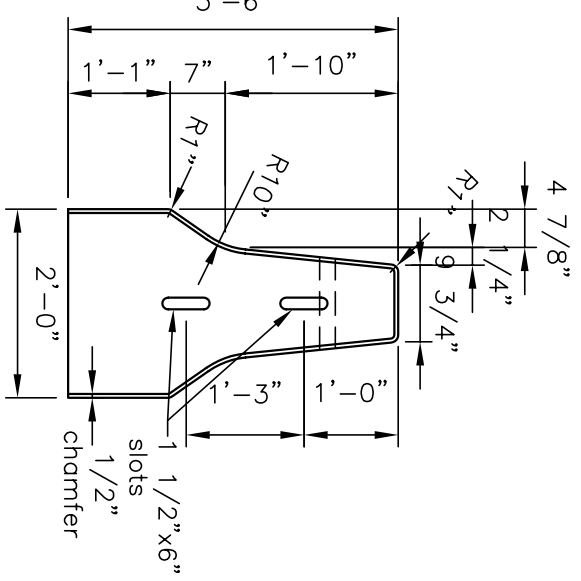


**PLAN**



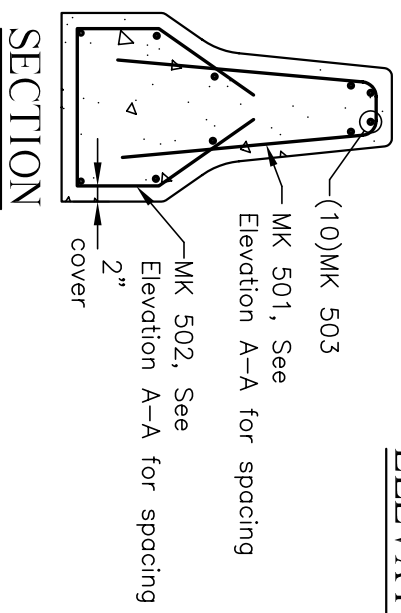
**ELEVATION A-A**



**ELEVATION B-B**

- Notes:
1. Concrete: 5000 psi @ 28 Days
  2. Reinforcing: Grade 60, Epoxy Coated

Revised 05/21/03 MS



**SECTION**

**CSI**  
**Concrete Systems Inc.**  
 9 Commercial St., Hudson, NH 03051  
 Phone 603-889-4163  
 Fax 603-889-0039

Drawn By	Date
CONCRETE CU. YD.	WEIGHT
1.83	3.70 tons
Approved By	Date

**DOUBLE FACE F TYPE BARRIER**  
**MASS PERMANENT**

No. Required: **A**

Drawing No.: **DFE2442PMA-1**

SCALE : D.N.S.

SHEET