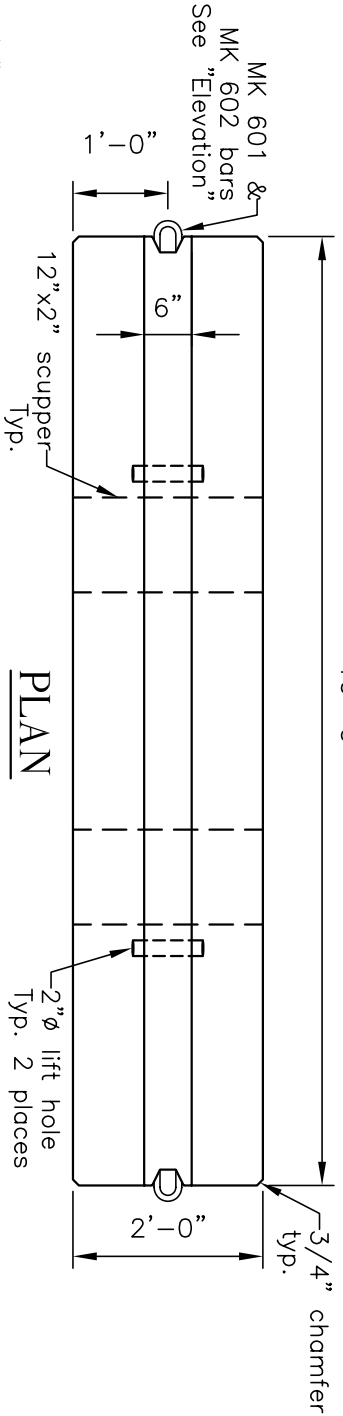
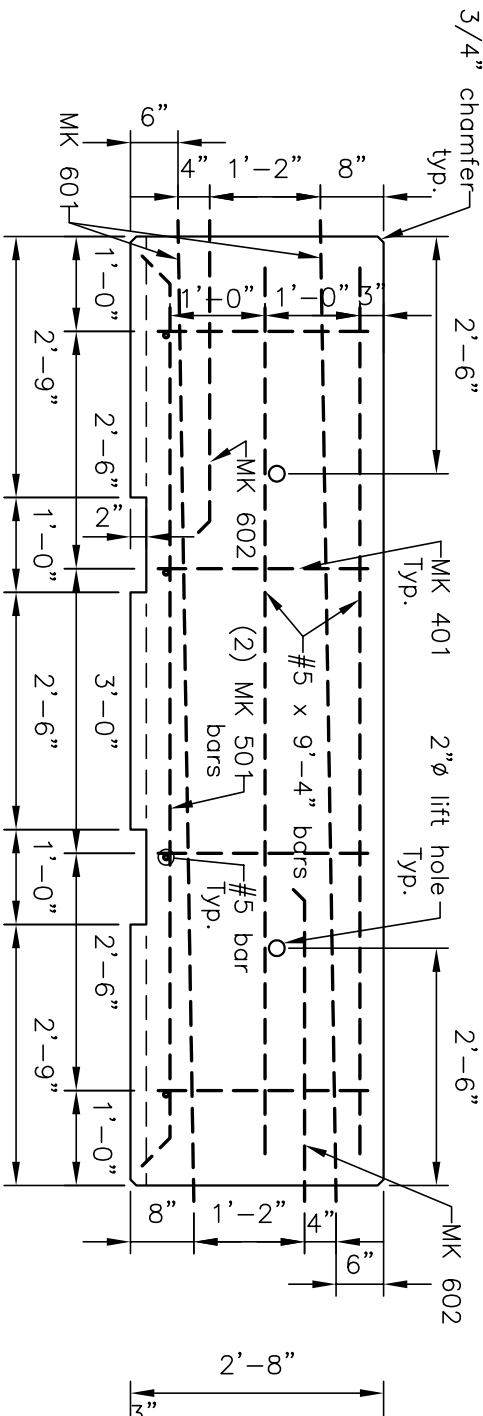
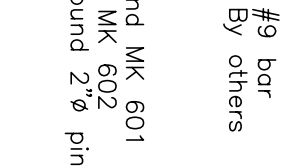


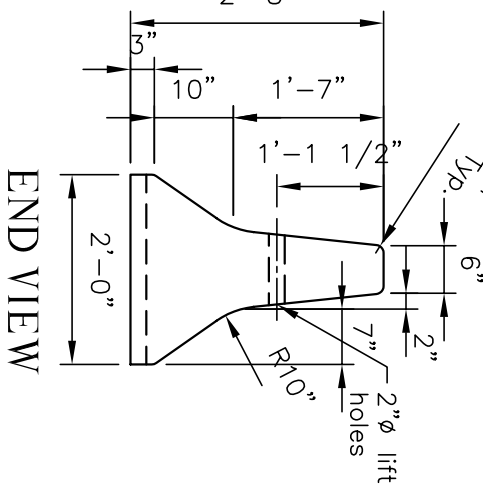
10'-0"



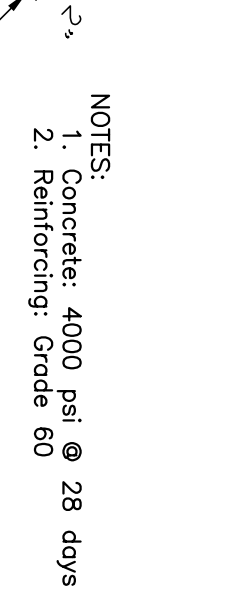
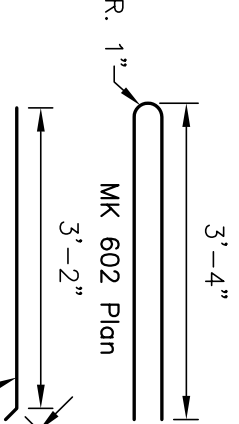
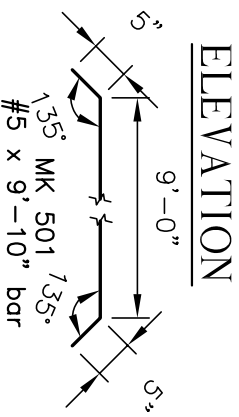
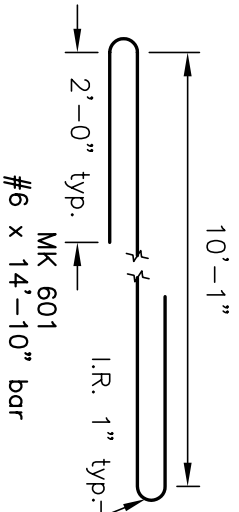
PLAN



ELEVATION

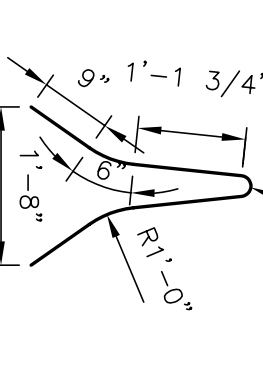
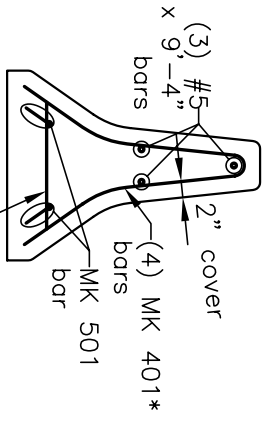


END VIEW




- NOTES:
- Concrete: 4000 psi @ 28 days
 - Reinforcing: Grade 60

REVISED 04/10/2003 AK



TYP. SECTION

BENDING SCHEDULE



Concrete Systems Inc.
 9 Commercial St., Hudson, NH, 03051
 Phone 603-889-4163
 Fax 603-889-0039

Drawn By	Date	CONCRETE CU. YD.	WEIGHT
		1.02	2.06 tons

Approved By _____ Date _____

NH STANDARD TEMP DF BARRIER

No. Required: **A** Drawing No. **DFJ2432TNH-1**

SCALE : 1/2" = 1'-0" SHEET 1