

MK 501 @ 12" EXCEPT LAST 4 AT EACH END TD BE AT 6"

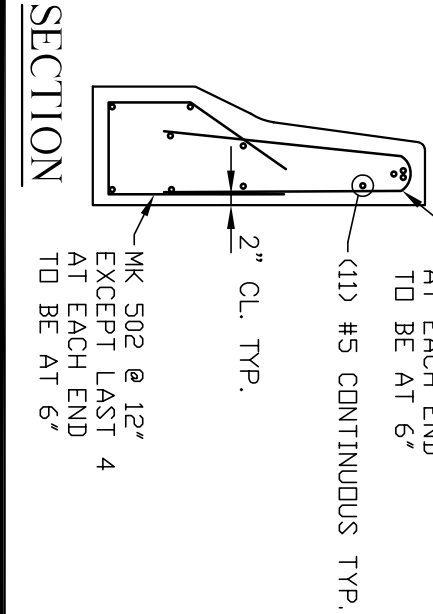
(11) #5 CONTINUOUS TYP.


2" CL. TYP.

MK 502 @ 12" EXCEPT LAST 4 AT EACH END TD BE AT 6"

**NOTES:**

1. Concrete: 4000 psi @ 28 days
2. Reinforcing: Grade 60, epoxy coated



 <p><b>Concrete Systems Inc.</b> 9 Commercial St., Hudson, NH 03051 Phone 603-889-4163 Fax 603-889-0039</p>		Drawn By	Date
		CONCRETE CU. YD.	WEIGHT
1.27	2.57 TONS	Approved By	Date

<p><b>"F" SHAPE SINGLE FACE BARRIER PERMANENT</b></p>		No. Required	Drawing No.
		A	SFF1542P-1
SCALE : D.N.S.		SHEET	