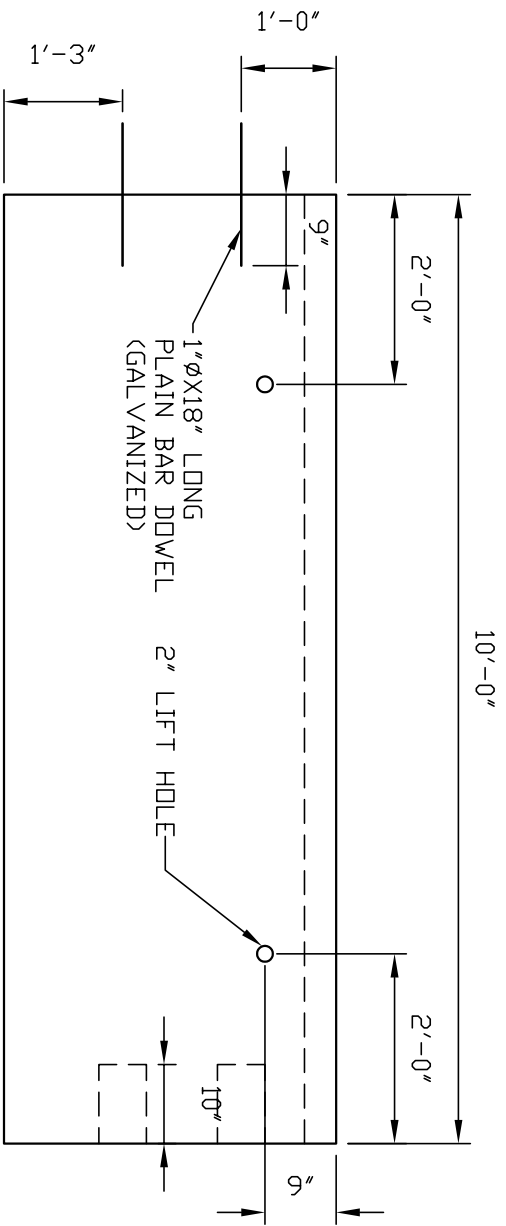
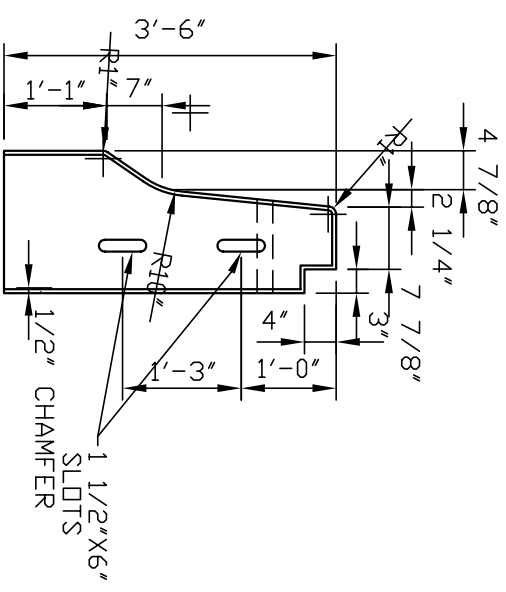


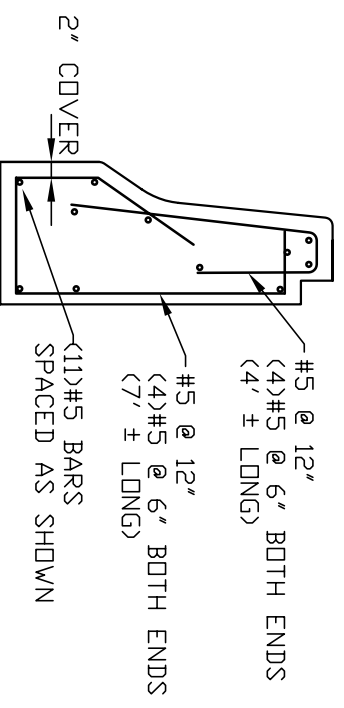
PLAN



ELEVATION




END VIEW



SECTION

- NOTES:
1. Concrete: 4000 psi @ 28 days
 2. Reinforcing: Grade 60, epoxy coated

 <p>Concrete Systems Inc. 9 Commercial St., Hudson, NH 03051 Phone 603-889-4163 Fax 603-889-0039</p>		Drawn By	Date
		CONCRETE CU. YD.	WEIGHT
1.53	3.10 TONS	Approved By	Date

"F" SHAPE SINGLE FACE BARRIER WITH CAP SEPARATOR PERMANENT		Drawing No.
A		SFF1842PC-1
SCALE : D.N.S.		SHEET