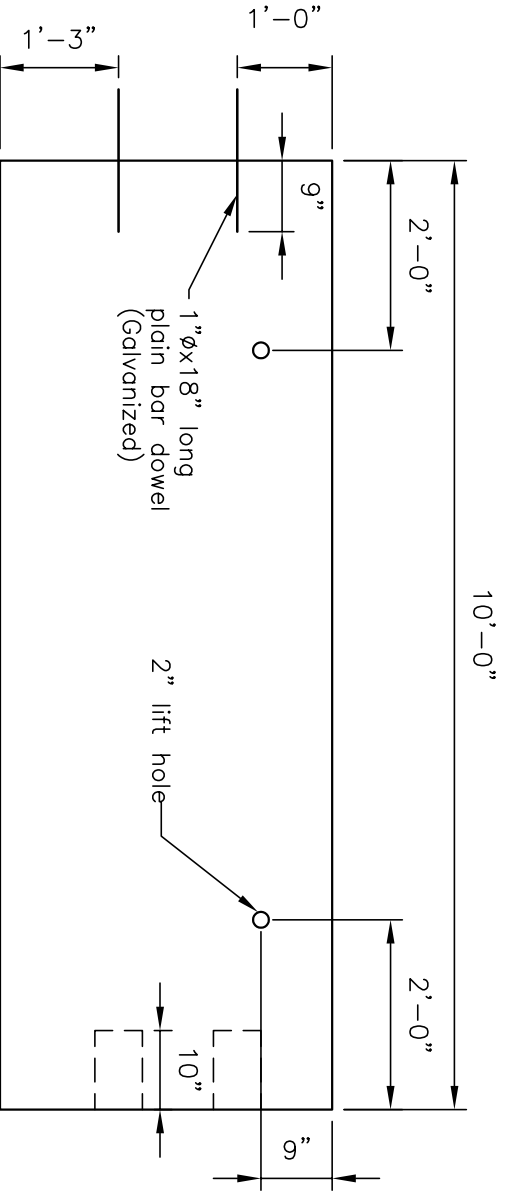
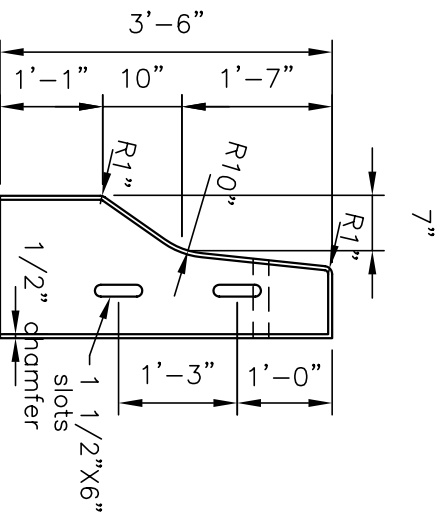


PLAN

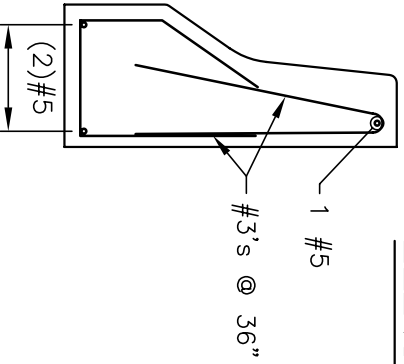


ELEVATION



END VIEW

- NOTES:
1. Concrete: 4000 psi @ 28 days
 2. Reinforcing: Grade 60, Epoxy Coated



SECTION



Concrete Systems Inc.
 9 Commercial St., Hudson, NH 03051
 Phone 603-889-4163
 Fax 603-889-0039

Drawn By _____ Date _____

CONCRETE CU. YD. _____ WEIGHT _____

1.46 2.97 tons

Approved By _____

Date _____

PERMANENT SINGLE FACE BARRIER

No. Required _____

Drawing No. _____

A

SFJ184210P

SCALE : 1/2" = 1'-0"

SHEET 1 of 1